

Veterinary Infusion Pump

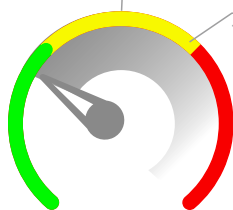


Accurate and Safe



- ✓ Large capacity lithium battery
- ✓ IP44 High-level dust-proof and waterproof

Intuitive and readable
real-time pressure display.



Warning reminder when
the occlusion pressure rises.

Configuration

Applicable Infusion Sets	1ml/15d, 1ml/19d, 1ml/20d, 1ml/60d
Flow Rate	ml/h mode: 0.1 ~ 1200ml/h (in 0.01ml/h increments) , drop/min mode: 1 ~ (400ml/h*d/60) d/min (in 1d/min increments)
BOLUS	Bolus rate: 0.1 ~ 1200ml/h (in 0.01ml/h increments) , VTBI(Volume to be infused): 0.1 ~ 100ml (in 0.01ml increments)
FF (Fast Forward)	FF rate: 0.1 ~ 1200ml/h (in 0.01ml/h increments) , VTBI(Volume to be infused): 0 ~ 9999.99ml (in 0.01ml increments)
VTBI	0.1 ~ 9999.99ml (in 0.01ml increments)
Cumulative Infusion Volume	0 ~ 9999.99ml (in 0.01ml increments)
Rate (ml/h) Accuracy	≤±5% (after calibration);
Rate (d/min) Accuracy	≤±5%
Occlusion Pressure	5 occlusion pressure levels (20、50、80、110、130) kPa
Alarms Information	Near infusion end, infusion finished, standby task finished, occlusion alarm, KVO completed, door opening, air-in-line, forgotten operation, low battery, battery empty, abnormal running state, equipment failure, power failure, replace tube, drop sensor is pulled out, Infusion set mismatch, Impending occlusion (optional), empty bottle, battery disconnected etc.
Dimensions	147mm (L) ×195mm (W) ×235mm (H)

New Design

- ✓ Exquisite and mini, portable
- ✓ 3.5'Large colorful touch-screen and key-board, dual control methods.



Simple and Convenient



Auto-lock Screen

Up to 11 levels time setting;
prevention for operation errors.



Night Mode

Design for night time safe operation.



History Record Cassette

Up to 50000pcs records.
Trackable treatments are ensured.



System self-test

System self-test is conducted every time
turning on, safeguard for every-time use.