

WELCOME TO FOLLOW



SEESHEEN ENDOSCOPE

SEESHEEN | TK-VETKIT



TK VETKIT CO.,LTD.
ADD:Plant 1, No. 199, Shui'an 1st Road, Xiangzhou District, Zhuhai
TEL:+86-755-23761871
EMAIL:intl@seesheen.com
WEB:www.seesheen.com

C-TKZH-202407-V3.0

VETERINARY ENDOSCOPE SYSTEM

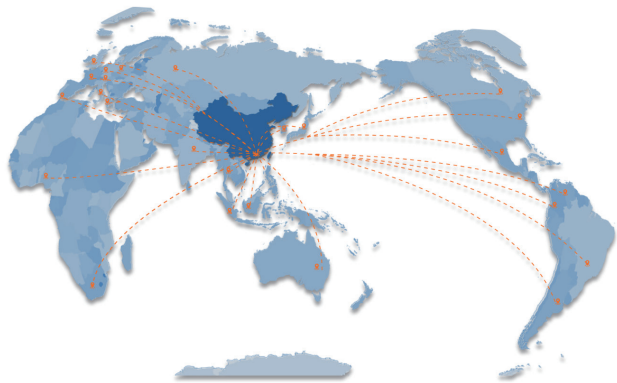


Company Introduction

Zhuhai TK VETKIT Medical Technology Co., Ltd., established in 2021, specializes in the R&D, production, sales, and service of veterinary endoscopes and related surgical consumables. As a wholly-owned subsidiary of Zhuhai Seesheen Medical Technology Co., Ltd., TK VETKIT offers comprehensive endoscopy solutions for veterinary applications. All our products are independently developed, offering a comprehensive range of endoscopes in various specifications. These endoscopes can be paired with multiple image processors to deliver clear and bright images, fully addressing the diagnostic and treatment needs of large, medium, and small animals. **Our products are sold both domestically and internationally, including to over 80 countries such as the United Kingdom, France, the United States, Australia, Spain, and Brazil. Our domestic sales and service team covers more than 30 provincial-level administrative regions.**

Market Distribution

Global professional sales team



Zhuhai Seesheen Medical Technology Co., Ltd., established in 2014, holds over 139 national patents and more than 22 software copyrights. Over the years, Seesheen has developed into a leading enterprise in the field of precise endoscopy in China, earning numerous honors such as "National Specialized and New 'Little Giant' Enterprise," "National High-Tech Enterprise". With over 400 employees, Seesheen's products are distributed to over 3,000 medical institutions both domestically and internationally.

Our company has a robust quality management system and a team of professional engineers. Our subsidiary, Zhuhai JieKang Medical Equipment Repair Co., Ltd., specializes in third-party endoscope repair services. With a 3,000-square-meter repair workshop, we handle over 3,000 endoscope repairs annually. Our strong technical capabilities and reliable after-sales service ensure customer satisfaction.



Overview of Customer Endoscope Installations



LED Light Source L-10

Features

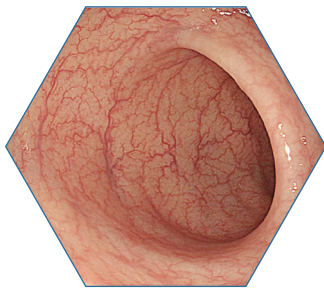
- ⦿ High brightness LED, good color restoration and long operation life.
- ⦿ Touch-screen control, friendly interactive interface.
- ⦿ Brightness with 9 levels adjustment, suitable for a variety of scenes.
- ⦿ All in one light source + water/air pump.



Specification

| Model | Power Voltage | Light | Air Pump Pressure | Diameter | Brightness | Air Pump |
|-------|---------------|-------|-------------------|----------|------------|----------|
| L-10 | 100-240V AC | LED | 45Kpa-65Kpa | φ8.5mm | 9 levels | 3 levels |

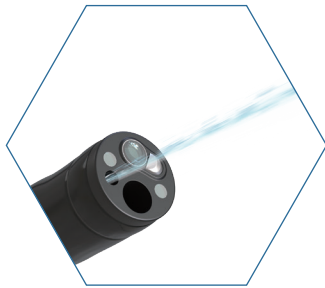
Features



FHD Image



Wide Angle



Water Jet



Angle Lock



Big Forceps Channel



Function Buttons

Portable System

- ⦿ Integrated design of mainframe, light source and monitor
- ⦿ Medical report management system with touch screen
- ⦿ Inside Battery ≥ 4hours working time



Tower System

- ⦿ High performance touch screen endoscopic image processor
- ⦿ Air/water pump + cold light source integrated high-end equipment
- ⦿ Medical report management system
- ⦿ Multifunctional trolley



Specification

| Model | Distal-end | Insertion Tube | Working Channel | Working Length | Up/Down | Left/Right | View Angle | Function Keys | Water Jet |
|------------|------------|----------------|-----------------|----------------|--------------|--------------|------------|---------------|-----------|
| GU-160H | 6.8mm | 6.8mm | 2.2mm | 1500mm | U210°, D130° | L100°, R100° | 120° | 3 | / |
| GU-170HQ | 7.8mm | 8.0mm | 2.8mm | 1500mm | U180°, D130° | L100°, R100° | 120° | 3 | / |
| GU-170FH | 7.8mm | 8.0mm | 2.2mm | 1500mm | U180°, D130° | L100°, R100° | 140° | 3 | / |
| GU-190FHP | 9.2mm | 9.3mm | 2.8mm | 1500mm | U180°, D130° | L100°, R100° | 140° | 3 | Yes |
| GU-190FHPL | 9.2mm | 9.3mm | 2.8mm | 3000mm | U180°, D130° | L100°, R100° | 140° | 3 | Yes |
| GU-1B0FHPL | 11.5mm | 11.3mm | 3.2mm | 3500mm | U180°, D180° | L160°, R160° | 140° | 3 | Yes |
| GF-14F | 5.8mm | 5.8mm | 2.2mm | 1500mm | U210°, D130° | L100°, R100° | 120° | 3 | / |
| GF-14 | 6.8mm | 6.8mm | 2.2mm | 1500mm | U210°, D130° | L100°, R100° | 120° | 3 | / |
| GF-14Q | 7.8mm | 8.0mm | 2.8mm | 1500mm | U180°, D130° | L100°, R100° | 120° | 3 | / |

LED Light Source L-10

Features

- ⦿ High brightness LED, good color restoration and long operation life.
- ⦿ Touch screen control, friendly interactive interface.
- ⦿ Brightness with 9 Level adjustment, suitable for a variety of scenes.
- ⦿ All in one light source +water/air pump.



Specification

| Model | Power Voltage | Light | Air Pump Pressure | Diameter | Brightness | Air Pump |
|-------|---------------|-------|-------------------|----------|------------|----------|
| L-10 | 100-240V AC | LED | 45Kpa-65Kpa | φ8.5mm | 9 Levels | 3 Levels |

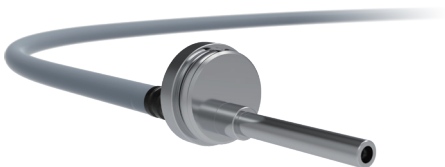
Intelligent Image Processor D-1322



Features

- ⦿ 21.5 inch touch-screen image processor
- ⦿ Full HD 1920×1080
- ⦿ Medical record management system
- ⦿ Support wire and wireless network

TK-VETKIT Light Cord



Rigid Scope



TK-VETKIT Camera Head:CM-U12



Features

- ⦿ Ergonomic design with lightweight, reduces surgeon fatigue during long procedures
- ⦿ IP67 Ingress Protection Rating,dust-proof and waterproof
- ⦿ Two-megapixel camera , full HD 1080P resolution
- ⦿ Camera head compatible with any rigid scope
- ⦿ Multi-function buttons, easily capturing and freezing FHD photos

Application

Laparoscopy for dogs, cats, cattle, sheep, horses, pigs, laboratory animals, wild animals and some aquatic animals.

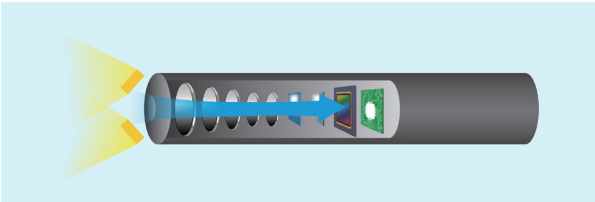


Specification



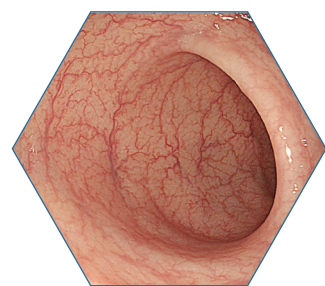
| NO. | Components | Model | Description |
|-----|-------------|-----------|--|
| 1 | Camera Head | CM-U12 | Full HD 1080P |
| 2 | Light Cord | LC-10 | Compatible with any brand of rigid scope |
| 3 | Rigid Scope | LA-050301 | Laparoscope 5.0mm diameter , 290mm working length, 30 degree |
| 4 | Rigid Scope | LC-1500 | Laparoscope 5.0mm diameter , 290mm working length, 0 degree |

EC Series *Portable Veterinary Endoscope System*



CMOS+LED Technology
Non-fiber design makes it durable and easy for maintenance.

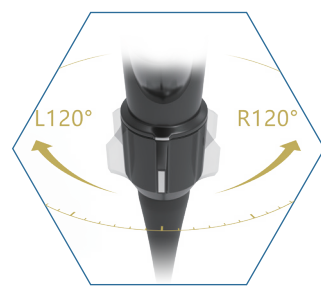
Features



High Definition
Perfect Image



Multi-function Buttons
①Zoom ②Capture/Record ③Freeze



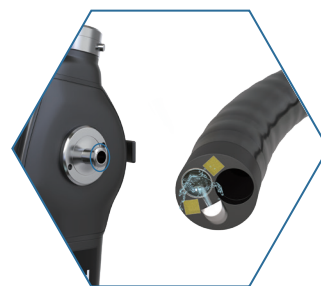
120° Left/Right Rotation
Relieve fatigue of wrist rotation



Detachable Structure
Compatible with all products



Video Cable With 180° Rotation
Easy operation



Water Vapor Outlet
Cleaning the camera

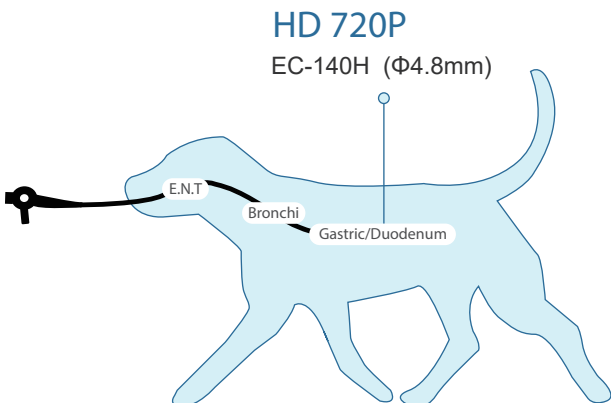
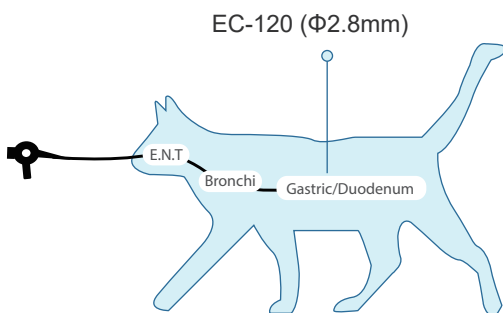
Portable

Equipped with 10 inch image processor D-1211 or 4 inch processor D-1105



Application

With slim diameter and 4-way angulation, EC-120,EC-130 and EC-140H are ideal for small animal applications, including bronchoscopy, rhinoscopy, oesophagus, foreign body retrieval, gastroscopy, cystoscopy, vaginoscopy,etc.

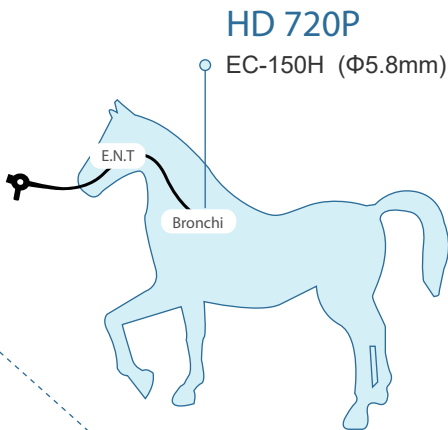


Specification

| Model | Distal-end | Insertion Tube | Working Channel | Working Length | Bending | Rotation | View Angle |
|---------|------------|----------------|-----------------|----------------|--------------|--------------|------------|
| EC-120 | 2.8mm | 2.8mm | 1.2mm | 610mm | U210°, D130° | L120°, R120° | 120° |
| EC-23FL | 2.8mm | 2.8mm | 1.2mm | 1000mm | U180°, D130° | L120°, R120° | 120° |
| EC-130 | 3.8mm | 3.8mm | 1.5mm | 1000mm | U180°, D130° | L120°, R120° | 120° |
| EC-140H | 4.8mm | 5mm | 2.0mm | 1000mm | U180°, D130° | L120°, R120° | 120° |

Application

With extended 1.5 meters working length and big working channel, EC-150H is ideal for equine applications, including upper and lower airway endoscopy, sinuscopy, vaginoscopy and hysteroscopy,etc.



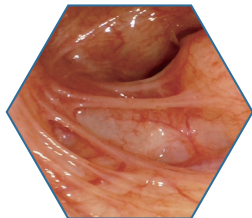
Specification

| Model | Distal-end | Insertion Tube | Working Channel | Working Length | Bending | Rotation | View Angle | Water Vapor Outlet |
|---------|------------|----------------|-----------------|----------------|--------------|--------------|------------|--------------------|
| EC-150H | 5.8mm | 5.9mm | 2.8mm | 1500mm | U180°, D130° | L120°, R120° | 120° | / |
| EC-250H | 5.8mm | 5.9mm | 2.8mm | 1500mm | U180°, D130° | L120°, R120° | 120° | YES |

EU Series *Portable USB system*



Features



High Definition
Perfect Image



CMOS+LED
No Fiber



Big Channel
1.2 -2.8mm

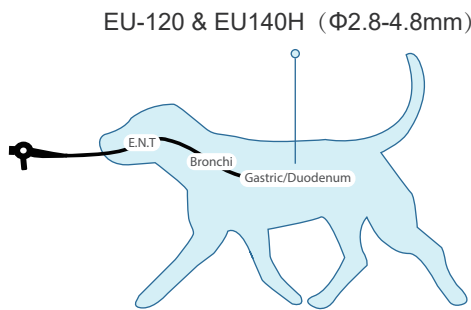


Multi-function Buttons
①White Balance ②Brightness
③Freeze

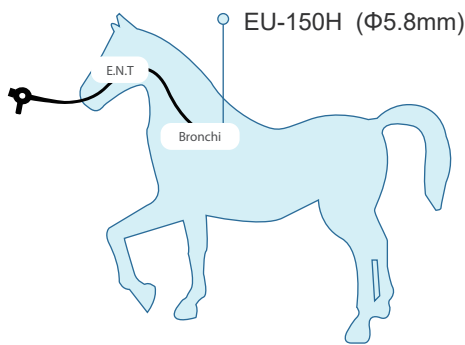


Water Vapor Outlet
Cleaning the camera

Application



Companion animals upper and lower respiratory tract.



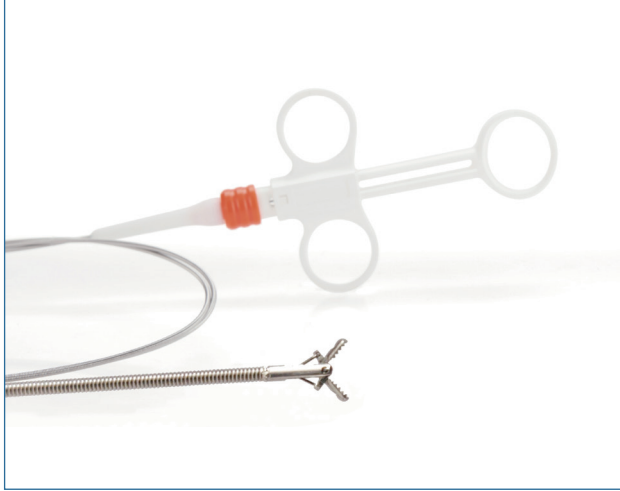
Large animal upper and lower respiratory tract.

Specification

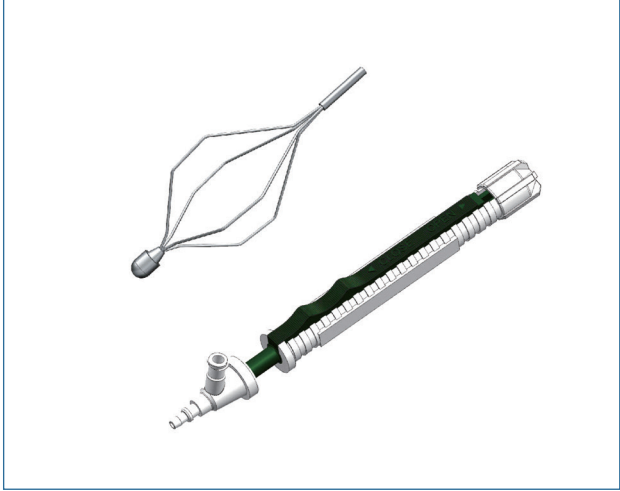
| Model | Distal-end | Insertion Tube | Working Channel | Working Length | Bending | Rotation | View Angle | Water Vapor Outle |
|---------|------------|----------------|-----------------|----------------|--------------|--------------|------------|-------------------|
| EU-120 | 2.8mm | 2.8mm | 1.2mm | 610mm | U210°, D130° | L120°, R120° | 120° | / |
| EU-130 | 3.8mm | 3.8mm | 1.5mm | 1000mm | U180°, D130° | L120°, R120° | 120° | / |
| EU-140H | 4.8mm | 5mm | 2.0mm | 1000mm | U180°, D130° | L120°, R120° | 120° | / |
| EU-150H | 5.8mm | 5.9mm | 2.8mm | 1500mm | U180°, D130° | L120°, R120° | 120° | / |
| EU-250H | 5.8mm | 5.9mm | 2.8mm | 1500mm | U180°, D130° | L120°, R120° | 120° | YES |

Disposable Endoscopic Accessories

Disposable Endoscopic Biopsy Forcep



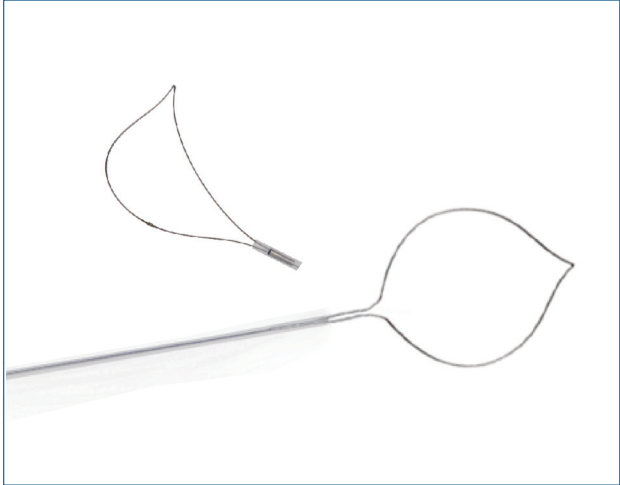
Disposable Endoscopic Basket Grasping Forcep



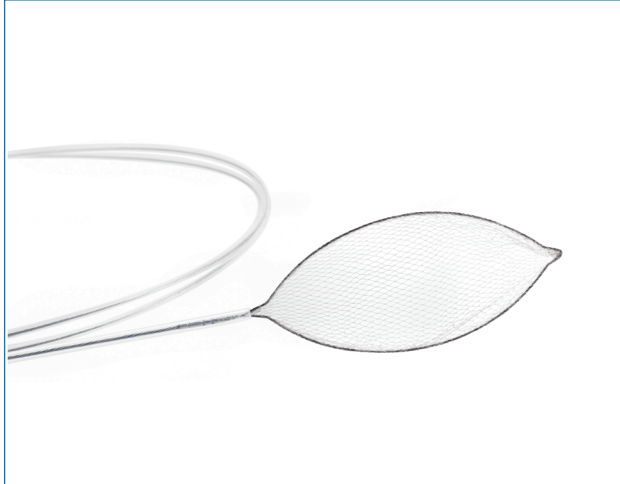
Disposable Endoscopic Spary Catheter



Disposable Polypectomy Electric Snare



Disposable Endoscopic Retriever



Disposable Endoscopic Grasping Forcep

